

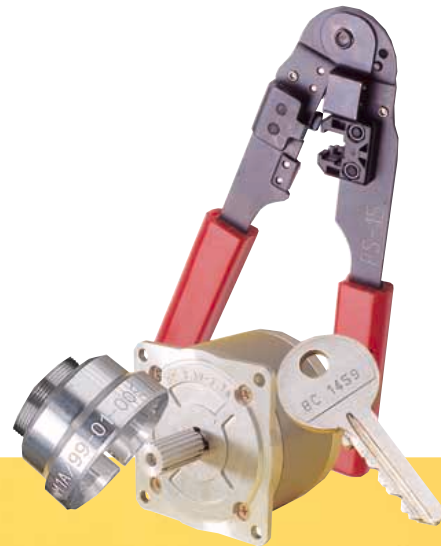
WINDOWS® ENHANCED MARKING SOFTWARE

PW

03

PRINCIPLE:

A versatile and user friendly Windows® based marking program.



[www. pro-pen.com](http://www.pro-pen.com)

1

USER FRIENDLY

As soon as the marking software PW03 is installed on a PC or laptop, you can enjoy all the benefits of a Windows® environment.

2

SCREEN PREVIEW

The graphic interface allows you to see the marking on screen prior to conducting your marking. For speed and ease of programming you can also make adjustments on screen using a mouse.

3

MARKING ASSISTANCE

Different help keys are available: X/Y tool positioning, file and block simulation without marking, and circular marking assistance.

4

PASSWORD CONTROL

Two levels of operators, which are locked by a password, allow you to limit access to the different menus in the program.

The software is also protected by a key which allows you to restrict use when required.

5

FLEXIBILITY AND FREEDOM

While the P3000 machine has its own integrated marking program the PW03 Windows® software allows much greater flexibility and programme control. In addition, the « Transfer files » function allows you to use Windows® to its full potential and to stock an unlimited number of marking files while safeguarding the independence of the machine.

6

LOGO ABILITY

The Windows® based software has the capability of downloading and transferring logos to the P3000.

TECHNICAL INFORMATION

Software Environment : Windows® 3.1, 95, 98 and NT.
Linear, Circular and Angular Marking

Automatic marking of dates, date codes, serial numbers and batch codes

Two user levels : supervisor and operator

Simulation and preview of marking

Geometric shapes (circles, squares, lines...etc)

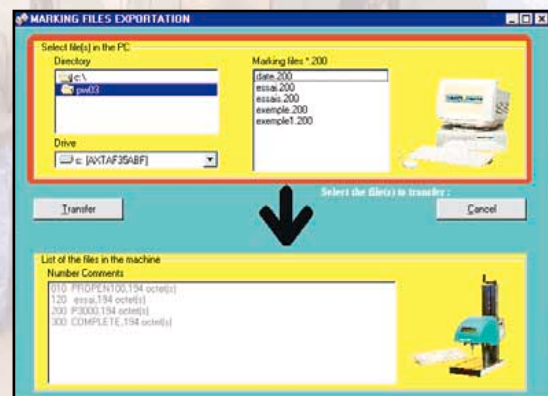
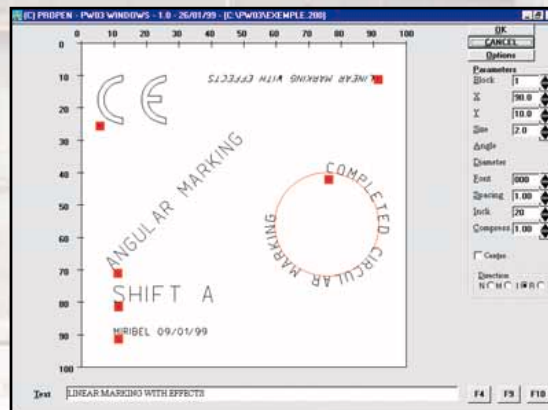
Standard fonts and matrix (5x7)

Drive of motorized rotating axis (DP3000)

Windows® is a registered trade mark of Microsoft Corp.U.S.A.



www.pro-pen.com



Distributor

